

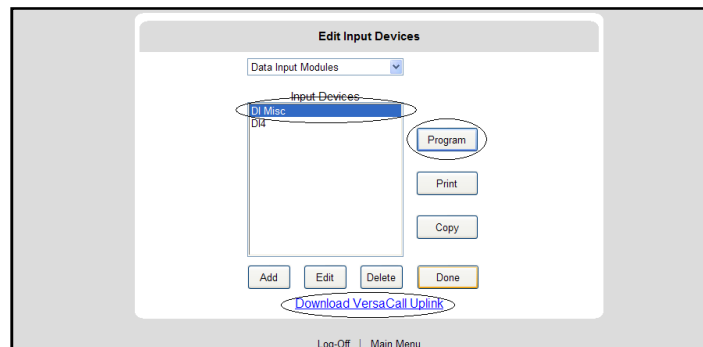


How to Program a DI Module

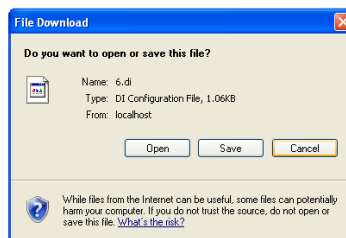
Doc. HT103

These steps explain how to configure your DI module in the VT2000 Web Interface, and then sync the configurations to the physical DI Module. To program your DI Module to the VT2000 WebInterface, login to the system and take the following steps from the main menu:

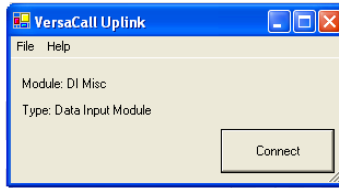
1. Click **Configuration** on the menu located on the left side of the screen.
2. Click **Inputs** on the menu located on the left side of the screen.
3. From the **Edit Input Devices** page, download and install the **VersaCall Uplink Utility** (if not already installed). To do this, click the **Download VersaCall Uplink** at the bottom of the page.
4. Next, you need to download a configuration file from the **Edit Input Devices** page. To do this, select the desired module and click **Program**.



5. You will then have the option to either Save or Open the file. If you are on a desktop PC and able to directly connect to the module you are programming, click **Open**. If you are on a laptop and plan to take the laptop out to the plant floor, click **Save**. If you choose to save, you can double click on the file to open it later.

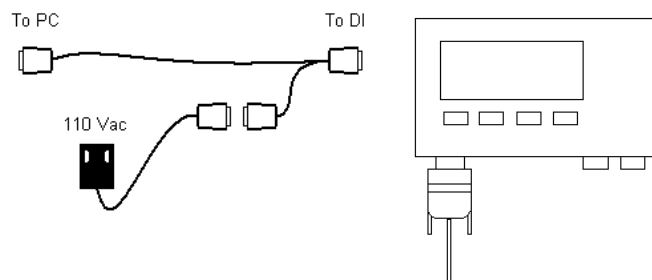


6. Once the configuration file opens, click **Connect**.

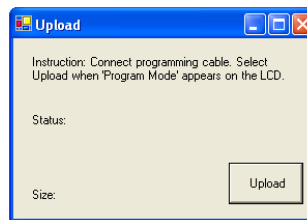


Note: It is always good to clear out any active alarms or active processes from the DI module prior to programming in order to prevent those alarms from hanging in the system.

7. Plug the programming cable into the main port (the one that stands alone) of the data input module. Connect the other end (long end) of the programming cable to the PC. The DI module needs a power either from the AC-DC transformer or the DI's normal power supply.



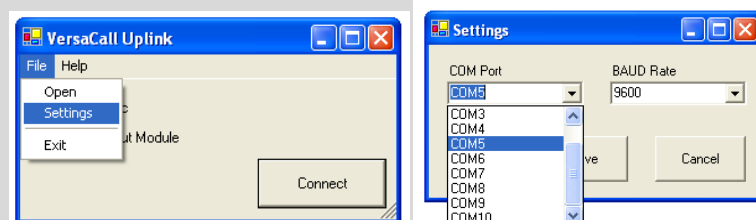
8. Once the programming cables are properly connected and the DI Module is supplied with power, the LCD screen should light up and display **Program Mode**. Click **Upload** on the uplink program.



9. During the upload process, numbers appear on the LCD screen. When the upload completes, **Done** appears on the Uplink program.

Troubleshooting:

- If a failure to open port or timeout error occurs, check to make sure VersaCall Uplink is using the correct COM port. You can change the port settings by going to the VersaCall Uplink program and selecting File → Settings. A new pop-up menu appears. Select an appropriate COM port from the drop down list and click **Save**.



- You may have something else running which is tying up the COM Port. Stop the conflicting process and retry.

10. Disconnect the programming cable. The module is now programmed.