

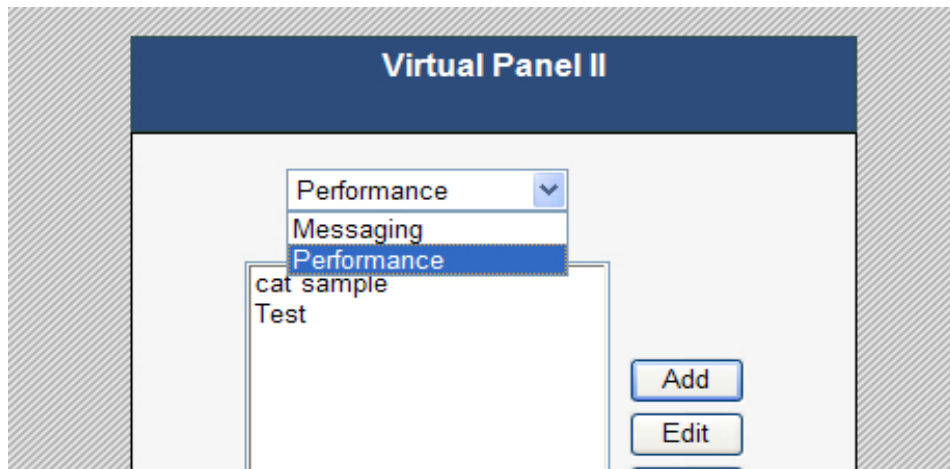


## How to Set Up a Virtual Panel

This document describes how to add a new panel to the Virtual Panels II package.

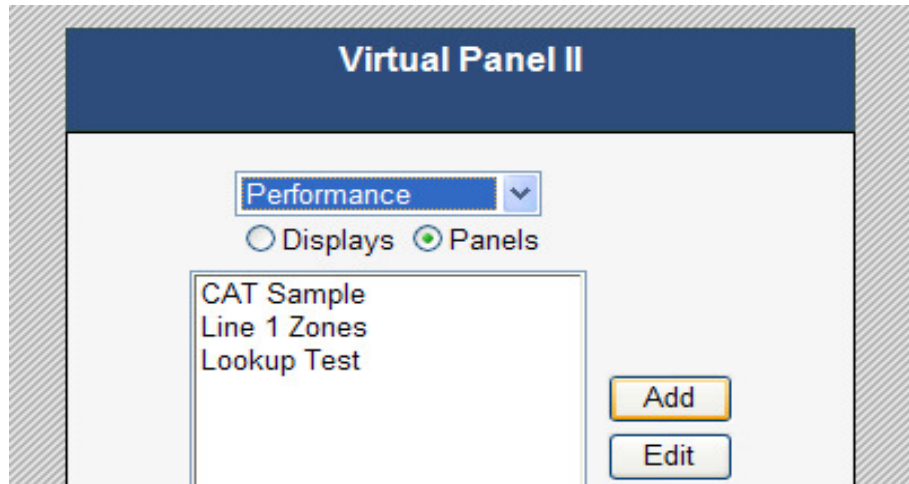
### 1. Select what type of panel.

First you need to make a decision of what type of panel you want to create: Messaging or Performance. Messaging panels consist of primarily text and images. Performance panels link to information from the VT2000 System.



### 2. Create panel.

After selecting the type of panel, make sure the Panels button is checked and click the Add button.



### 3. Set up general options, name panel etc.

Name the panel. Give it a name representative of what information it is showing. Set up the Height and Width of the panel. These units are in pixels. Set up the default colors and default font information.

Panel Options (Hide Details)	
<b>Panel:</b>	Height: 800, Width: 1000
<b>Layout:</b>	Type: Table, Cell Spacing: 0, Cell Padding: 0
<b>Font:</b>	Style: Times New Rom, Size: 24
<b>Alignment:</b>	Horizontal: Center, Vertical: Middle
<b>Color:</b>	Background: [White Box], Foreground: [Black Box]
<b>Border:</b>	Style: Solid, Color: [Black Box], Width: 1

[Help](#)

### 4. Set up tags (Performance panels only)

In order to pull data from the VT2000 System you must create tag(s) and link them to the desired functionality. Set up tags for all information you want to display on your panel.

To get the duration of an active alarm create a tag. Call it whatever best represents it. There are no spaces allowed in tag names. For functionality, select Duration. For time period, select Active. For data source, select alarm. Then select the module

desired and the alarm from that module. Selecting Cascade will include all sub alarms.

**Edit Panel**

Panel Name  Panel Type  Panel ID

Panel Options (Show Details)

Tags (Hide Details) [Help](#)

TagFunctionality

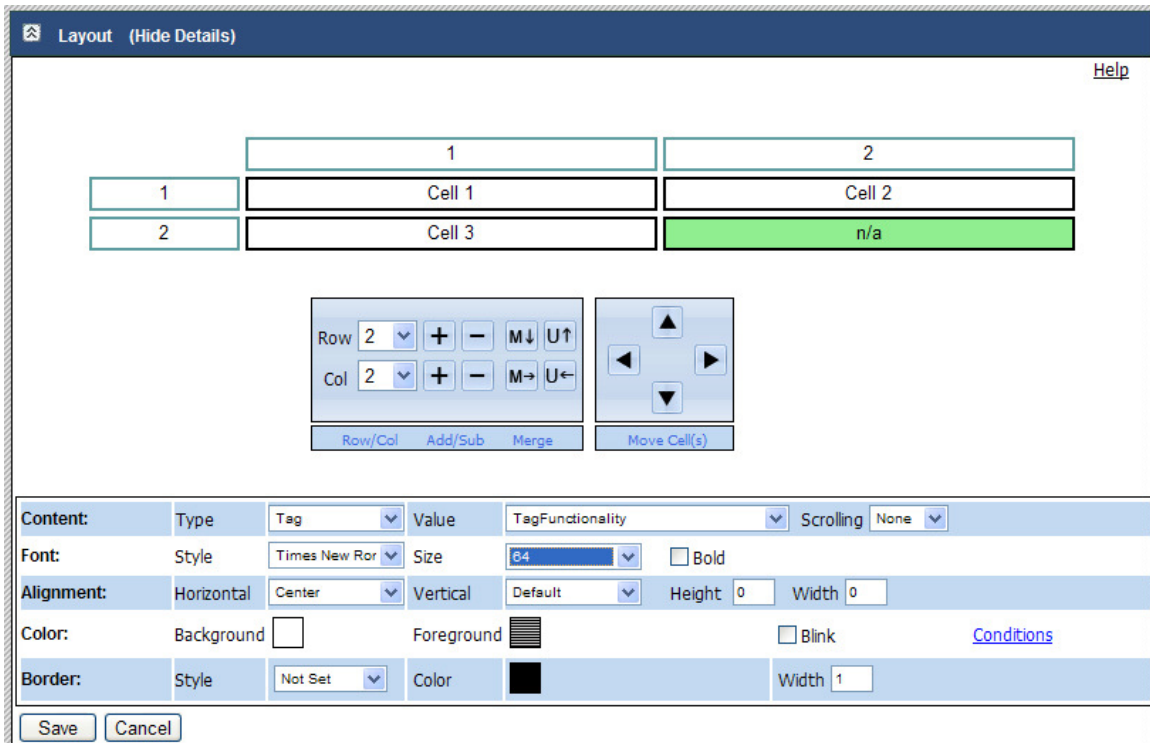
Tag Name   
Functionality   
Time Period   
Data Source   
Module  Alarm   Cascade  
Result Type  Format

Layout (Show Details)

## 5. Layout panel.

Create however many rows and columns that are necessary by clicking on the '+' sign next to Row and Column. Click on each cell and either add text to that cell or link that cell to a tag or image. Set up any color or font information and then save that cell. Click on another cell and continue process.

\*note – if a change is made to a cell, that cell must be saved before a new cell is selected or your changes will be lost.



## 6. Save panel.

Click the Save button at the top to save the entire panel.

## 7. Add panel to a display.

Click the display radio button up top to see all configured displays. Either create a new display by clicking the Add button or edit an existing display by selecting it and clicking the Edit button. Now either replace an existing panel record by clicking the corresponding Edit button or add a new panel to the display by clicking the “Add a new panel” button. Select the desired panel to show from the list (NOTE: Messaging displays will only show Messaging panels, although Performance displays will show both Messaging and Performance panels). Select the desired duration for showing the panel (in seconds). Make sure to save the panel record by clicking the Update button. Then save the entire display by clicking the Save button.

Display ID   
Display Name   
Display Type   
Refresh Rate  s  
Full Screen

Index Key		Panel	Duration	
-1	-1	<input type="text" value="Demo Panel"/>	<input type="text" value="30"/>	<a href="#">Update</a> <a href="#">Cancel</a>

[Add a panel ...](#)