

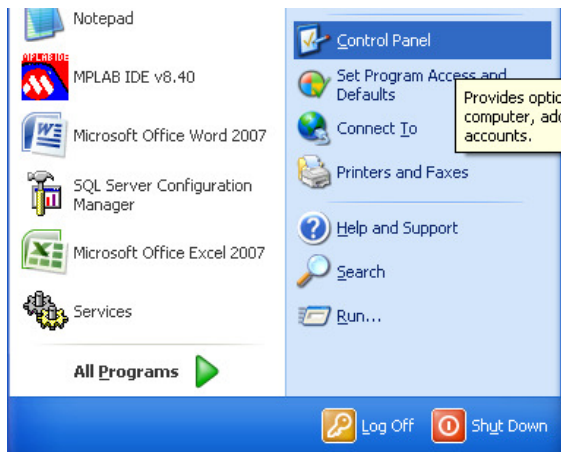


“How to” Document Series

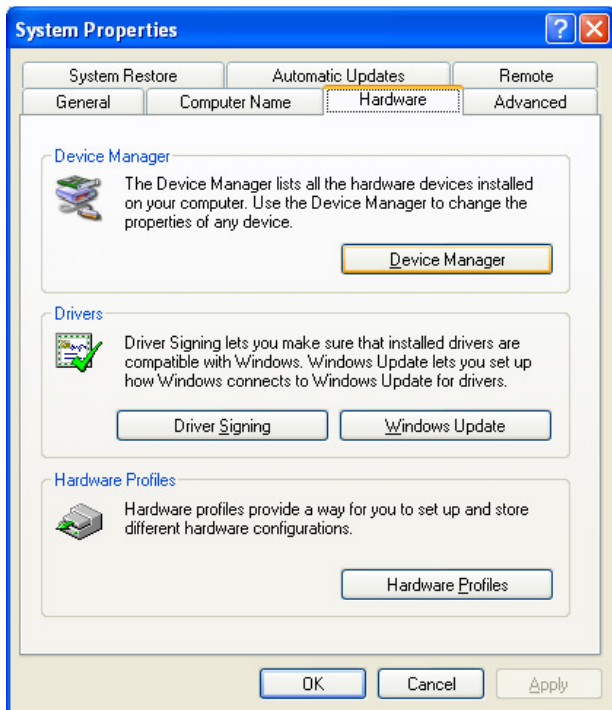
How to Set Up a Serial Mesh Coordinator

Doc. HT116

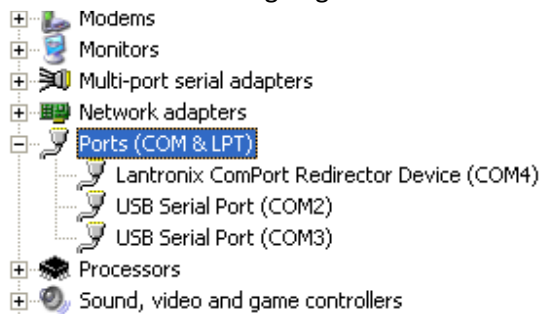
1. First we need to establish a list of the available Serial (COM) Ports. This normally means attaching a keyboard and mouse to the system, though a Remote Desktop connection can be used if you are able to do so.
2. Click on the **Start** menu and select **Control Panel**.



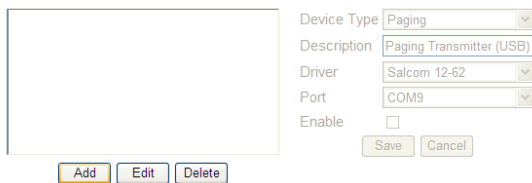
3. Switch to *Classic View* (if necessary) and double-click on **System**.
4. Select the *Hardware* tab and click on **Device Manager**.



- Expand the Ports (COM & LPT) section and see the list of available ports on the system. Make a note of these as we are going to use one of them.



- Open up the VT2000 WebInterface. If on the server, this can be done by opening up Internet Explorer and typing in *localhost* in the address bar.
- Log in as normal (the default login if not changed is, username: admin, password: admin). Click on **Administration** and then **System Settings**.
- Scroll to the bottom of the page and click the **Add** button.



- Select *Transceiver* for **Device Type**. Put *Mesh Coordinator (Serial)* in for the **Description**. Select the appropriate **Driver** (usually *DigiMesh 900* or *DigiMesh 900 (9600)*). Select the appropriate

Port (this may be a trial and error process). Make sure the **Enable** box is checked. Click **Save** (the little one next to the above information).

Device Type
Description
Driver
Port
Enable

10. Click the large **Save** at the bottom to save the changes made on the page.

11. Back at the *Administration* menu, click on the **Control Panel** button.

12. Click on the **Stop** button. Then you might have to click on the **Refresh** button a couple times until you can hit the **Start** button. This restarts the VT2000 Service, which is necessary when you add a new Mesh Coordinator or make changes to an existing one.

Service Status: Running

13. Click on the **Diagnostics** link along the top of the page. Then click the **Mesh Status** button.

14. Plug in/power up one or more mesh devices (Repeater, Call Station, RCM, DI) you might have and watch the screen for them to show up

Mesh Status					
Network	Address	Module Type	Module Name	Last Checked In	Monitored
#1	0013A20040615BD3	Data Input Module v4.0	Line #1	00:00:13	<input type="checkbox"/>

[Edit Monitors](#)

15. If something shows up, you are done. If nothing shows up, go back to Step 9 and edit the Mesh Coordinator you set up. Chances are it is on a different **Port** or needs a different **Driver**. If using battery powered mesh devices, it is best to open up the box and hit the yellow reset button inside, to force it to wake up and check in to the system.